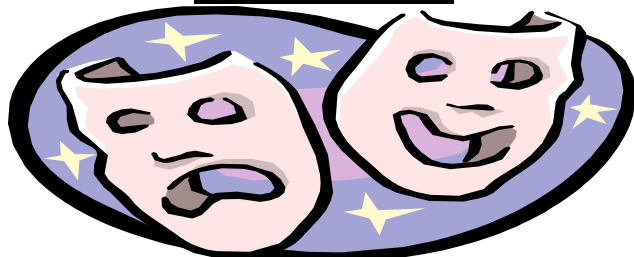


# Otford Parish Council February Newsletter 2004 No 120

Kent and South & South East England  
Village of the Year 2002

Clerk: Mrs. B.J. Darby  
The School House, 21, High Street, Otford,  
Sevenoaks, Kent TN14 5PG  
Telephone/answerphone: 01959 524808  
Fax: 01959 525298  
otfordpc@btinternet.com  
Office hours 8.30 to 12.30 Mon to Fri

## A Parson's Tale



As part of the Applause programme we are happy to present 'A Parsons Tale' a comedy devised and performed by Christopher Owen. The performance takes place in the Otford Village Hall on **Thursday 4<sup>th</sup> March** at 7.30pm. Tickets are priced £5 adults, £4 concessions and £3 children and are available from the Parish Council office.

Christopher Owen plays the Rev J.T. Smith, Rector of St Peter's Mulworth. The year is 1895 and the Rev Smith has just arrived at the Parish Hall in the village of Norton. It is a very special occasion: the celebration of the rebuilding of the Old Bell Tower at St Peter's. A guest speaker, the Very Rev Dean Hole is expected. Songs are to be sung by Rev Smith's wife and his former curate Mr Rashleigh, now Rector of the Parish of Norton. Extracts from Charlotte Bronte, Washington Irving are to be performed. Unfortunately, neither Dean Hole, nor Mr Rashleigh, nor Rev Smith's wife has yet arrived. But the audience has...*An outstanding performance, much enjoyed by the audience, which gave him a prolonged ovation - The Stage*

## Tree of Light

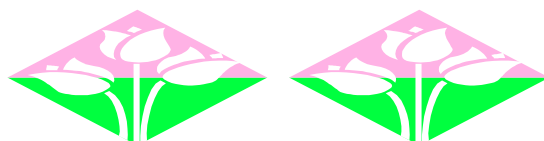


Please note that the actual amount collected for Hospice in the Weald has now gone up to £1,240.

## Flower Arrangement Demonstration

Otford Gardeners' Society is holding a Flower Arrangement Demonstration in the Club Room of Otford Village Hall on **Friday 20<sup>th</sup> February** at 2.30pm. The demonstrator will be Mrs Rene Fry, a very experienced flower arranger and judge, who gave a very successful demonstration for the Society two years ago. The cost will be £2.50 for Gardening Society members and £3 for non-members – to include refreshments. For further details please call Sheila Dickerson on 01959 524183.

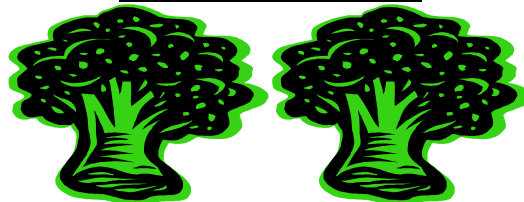
## Otford Gardeners' Society



The first talk in the Otford Gardeners' Society year will take place in Otford Memorial Hall on **Tuesday 2<sup>nd</sup> March** at 8pm 'The Millennium Seed Project' is an illustrated talk by John Withall. Admission is 50p for members and £1 for non-members.

The Spring Show will take place in the Village Hall on **Saturday 20<sup>th</sup> March** between 2.15pm – 4.30pm, featuring spring bulbs and flowers, flower arrangements, cookery, photographic and junior classes. Admission is 50p with under 16's free.

## Otford Allotments



From Barbara Hine – Allotment Agent

"From Winter blues to Spring Greens (the colour rather than the vegetable – or maybe both). Whatever, it is now time to seriously consider your garden, whether it be at home or on an allotment. Someone said to me recently that allotments are only for the elderly and/or retired. As far as Otford Allotments is concerned this is certainly not the case as over the last year many young people and their children have decided to rent an allotment and are continuing to enjoy the benefits of fresh vegetables and fruit from garden to table. It is true that quite a number of plot-holders are retired but certainly not elderly, in fact the only old thing on the site is our shed and we are now having to consider raising some funds towards its replacement and to celebrate our 50<sup>th</sup> anniversary. To this end the Association is holding a Boot Fair in the Village Hall on **Saturday 3<sup>rd</sup> April from 9.30am to 12.30pm**. The cost of renting a table is £7 and all other details can be obtained from Eve Wiltshire on 01959 524887 (eves and weekends only). But hurry these events are very popular. If on the

other hand your interest is mainly in getting your garden tools onto and into an allotment, there are one or two small plots that may become available, but again get in quick if you want to get an early start in the gardening year. To find out what is available give Barbara Hine a ring on 01959 525468 or call into the Parish Office on any weekday morning for details.

### Embroiderers' Guild

The Sevenoaks Branch of the Embroiderers' Guild will be holding its next meeting in the Village Memorial Hall on Saturday 28<sup>th</sup> February when Helen Deighan will present a Show and Tell on the Advantages of using Dyed Fabrics. This will begin at 2pm. Visitors are always welcome. For more information call Barbara Savager on 01959 523484.



### School Train

Before the advent of Eurostar, it was possible for students to catch a through train from Otford to Tonbridge at about 8am, returning from Tonbridge at about 4pm. At present there is only a through train at 8.20am from Otford reaching Tonbridge at 8.44am, much too late to reach Judd, Tonbridge Grammar School for Girls etc. There is no return through train so that a change of train and platform is necessary at Sevenoaks. Now that Eurostar has moved to the High Speed link, the Parish Council – with much help from the Sevenoaks Rail Travellers Association – is trying to persuade South Eastern trains to reinstate the through trains at more suitable times e.g.

Depart Otford – about 8.04am  
Arrive Tonbridge - about 8.25am

Depart Tonbridge - about 4.10pm  
Arrive Otford - about 4.30pm

What do you think? If these proposals are not suitable, please let us know as soon as possible either by leaving a message on 01959 524808 or a brief note to the Parish Council at 21, High Street. It is unlikely that any change would be possible before September of this year.

P.S. If you work in the City, don't forget the two new Monday to Friday trains

Depart Cannon Street 4.14pm and 7.14pm

Depart London Bridge 4.18pm and 7.18pm

Arriving Otford at 4.48pm and 7.47pm

The first City to Otford trains – non-stop from London Bridge!

### Otford Oast W.I

The WI is all about today's women developing their talents and having a positive impact on the world around them. Women join WI for different reasons: Friendship, fun, outings, and getting to know people in their local community. The Otford Oast WI can provide all that and more besides. Their programme covers all interests from demonstrations and talks to actively taking part in craft, cookery, local history, gardening, parenting, beauty and health, music, drama, public and community affairs and much more. Outside of their monthly meetings they organise various event too: craft dabble days, walks, trips to art galleries and theatres and beauty parties for example. As many of the members are mums, they provide a free crèche for the meetings and organise events around school times and terms. They also include the children in their outings and sometimes have specific events for them like a theatre trip. So why not go along and give it a try, you can be sure of a warm welcome. The first visit is free, second visit £1.50 and Annual membership is £20. For more information please contact Mrs D Metcalfe on 01322 271873.

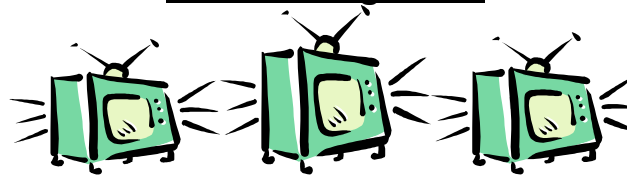
Their next meeting will be on Thursday 19<sup>th</sup> February and they will have a talk from Stoney Parsons on Modern Stained Glass. From her Eridge workroom she creates stained glass projects to inspire us all. She will be bringing slides of her work and explaining what is involved from design through to manufacture.

### Police Surgery



The next Police Surgery will take place on Wednesday 3rd March 2004 and PC Jackie Allen will again be joined by Lorraine Chapman from West Kent Housing. So if you have any concerns please come and see them between 10am and 12 noon.

### Otford Village Fete



The Otford Village Fete will be held on the 31<sup>st</sup> May. The fun begins at 1pm when the procession has arrived in the main arena. The theme for the procession is 'Television'. The organisers would like as many people / groups as possible to be involved in the procession as numbers were down last year. Anyone who is interested in participating – village or commercial stalls, attractions or even helping out on the day – should contact either Mark Stevens on 01959 523881 or Andrew Hickson 01959 525120. It is always a fun day out and this year should prove to be no exception

## Otford Methodist Wednesday Afternoons Women's Fellowship

Everyone is welcome to attend these meetings which take place at 2.30pm in the Methodist Church Hall and a list of the next two months speakers and events are as follows: -

### February

18<sup>th</sup> St Barts ladies join – Judy Mayo – *Oak Hall*

25<sup>th</sup> – Members afternoon and tea

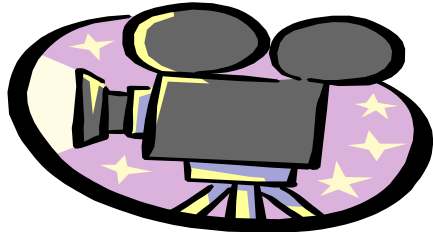
### March

5<sup>th</sup> (Friday) – *Women's World Day of Prayer*

10<sup>th</sup> – Peter Hills – *In the steps of Woodbine Willie*

17<sup>th</sup> March – Alan Denton – *Old Tyme Music Hall*

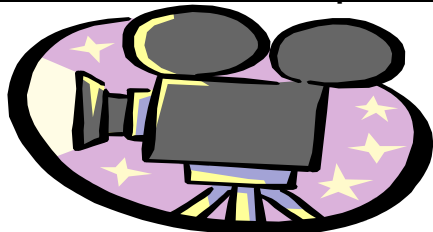
## Otford & District Wine Club



Unfortunately the Otford & District Wine Club could not hold its Wine Tasting on 28<sup>th</sup> January due to the sudden short, sharp bout of bad weather. They hope that no one was inconvenienced by this. The next meeting will be on Wednesday 25<sup>th</sup> February and will be a film show. They will be showing a variety of films, some made in the Sevenoaks area, and these will include travel, comedy, animation and drama. Ice creams will be provided in the interval. As usual it will be held in the Otford Memorial Hall and will be free to members but there will be a small fee for visitors. It will begin at 8pm. Why not go along and enjoy a night out at the cinema.

Please also note Wednesday 31<sup>st</sup> March, in your diaries as they will be holding a Spring Social with a buffet supper (including wine) on that date in the Memorial Hall. There will be music and a cabaret and the price will be £10 for members and £12 for visitors. The caterers need to know the numbers attending in good time, so please let the Secretary know if you can come on 01732 761359 as soon as possible

## Adventure in the Hopfields



Hospice in the Weald, Sevenoaks Link and the Rotary Club of Amherst, Sevenoaks jointly present a charity film show 'Adventure in the Hopfields' presented by Barry Littlechild – film historian and retired BBC producer at The Bradbourne School, Bradbourne Vale Road, Sevenoaks on Saturday 6<sup>th</sup> March 6.30pm for 7pm. Tickets £5 from Janet on 01732 761104,

Bill on 01732 871097 or from the Sevenoaks Hospice Shop. There will also be a bar, refreshments and a raffle.

An enthralling journey down Memory lane – a treat for all the family and anyone interested in film-making and history of the 20<sup>th</sup> Century.

## Otford & District Historical Society

The next meeting of the Society will take place on Wednesday 18th February at 8pm in the Village Hall. The talk is by John Elderton on *Inland Waterways of Kent 1740 – 1850*. Everyone is welcome to attend. Membership of the Society is just £3 per year and non-members are welcome to each talk for just £1.

## Ducklings Nursery Pre-school



Are you looking for a nursery for your child? Ducklings, has been established in Otford for more than 20 years. They take children from 2½ years to Primary School entry. Ducklings, offers a safe and caring environment at St Bartholomew's Church Hall. They are open Monday to Friday 9.15am to 12.15pm (until 3.15pm on Mondays and Wednesdays). Ducklings, more than meets OFSTED requirements and gained a glowing report on the last inspection. As a not for profit nursery, they ensure that all the money is used for the children's benefit. Contact Maureen Perry on 01959 524298 or Liz Williamson on 01959 523564 for details.

## Picture of the Month

The format to the Picture of the Month is changing. As the Parish Newsletter is normally produced in the middle of a month, it has been decided to make the change over of pictures at the same time. This will allow members of the public a much longer viewing period and a better chance to see the artistic talent that we have in the village. The artist for February – March is Sharon Mitchell. She first became interested in art while at school and has recently taken up the hobby, as a form of therapy following a stroke. She has started with watercolours but hopes to experiment with other mediums. Sharon is a member of the Otford Art Group.

## Otford Folk Dance Club



The 31<sup>st</sup> Club Birthday is on Thursday 26<sup>th</sup> February at 8pm in the Otford Parish Church Hall with the Footnotes Band with Eddie and Morris calling. Admission is £1.50 American Supper, Tea, Coffee, Squash included.

The regular 'Thursday Nights' run from 8pm in the Parish Church Hall and mostly finish at 10pm. Admission and membership is £1.50. The first visit is FREE! Including Tea / Coffee and biscuits. They have dancing to Eddie and Morris each usually taking half of the evening. But on the last Thursday in the month they are supported by visiting callers or musicians. There are also the occasional bigger dances, details on the club website of <http://myweb.tiscali.co.uk/otfordfdc2> They welcome new members at any time. All dances are walked through first and called. Enjoyment takes first place over skill. Don't be put off, because you can't commit to regular visits. They have over 100 members, many of whom just go along from time to time when they can. So why not go along when you can and enjoy the friendly atmosphere of the Otford Club.

### Sevenoaks Swing Dance Club

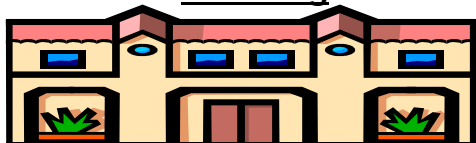
The next meeting of the Sevenoaks Swing Dance Club is on **Tuesday 24<sup>th</sup> February** in Otford Church Hall. Lessons in 'Lindy Hop' (early jive) are given by London teacher Porl Smith. They start at 8pm for beginners and 9pm for the more advanced. £6 on the door. The next meetings will be on March 9<sup>th</sup> and 23<sup>rd</sup>. For further information call 01959 522810

### CAB Surgery

To find out more contact them at The Library, Buckhurst Lane, Sevenoaks, Kent TN13 1HW. The office is open from 10am to 3pm Monday, Tuesday, Thursday and Friday. Wednesday 10am and 1pm appointments for form filling  
( Tel No: 01732 - 454443  
( Fax No: 01732 - 463164  
( E-mail: [7oakscab@dial.pipex.com](mailto:7oakscab@dial.pipex.com)  
Web page: [www.7oakscab@dial.pipex.com](http://www.7oakscab@dial.pipex.com)

An adviser from CAB is at the Otford Parish Council office on the 1st Tuesday of each month between 10am and 12noon. Please use this local service. The next surgery will be on 2<sup>nd</sup> March

### Planning



The following applications were considered by the Parish Council at its meeting in February. For more information, please contact the Parish Clerk or the Strategic Services Director, Sevenoaks District Council, Argyle Road, Sevenoaks, Kent on 01732 227000

#### a. New applications

SE/03/02978 Beadles Sevenoaks Rd  
Installation of lighting to canopy at jet wash area

SE/03/02987 Akenfield 35 Greenhill Rd  
New dormer window to rear elevation providing lighting to existing loft area

SE/03/03040 32 Greenhill Rd  
Erection of replacement dwelling with integral garage

SE/04/00108 7 Tudor Drive  
Single storey side and rear extensions

SE/04/00153 Greenways Shoreham Road  
Erection of a two-storey side extension (revised)

#### b. Amended applications

SE/03/02601 Park Farm High Street  
Installation of a 15m high lightning tree mast with 3 no antennas and 1 no transmission dish internal to the tree, together with ground level equipment within a fenced compound of dimensions of 11.8m a 4m x 2.3m

#### c. Results Received

SE/03/02603 Greenways Shoreham Rd  
Two storey side extension *Refused*

SE/03/02733 5 Tudor Drive  
Erection of a single storey side extension, first floor extension, front porch and associated alterations

*Allowed*

SE/03/02747 80 Evelyn Rd  
Proposed kitchen/dining room extension

*Allowed*

SE/03/02749 52b Pilgrims Way East  
Proposed attached garage extension

*Allowed*

SE/03/02842 16 Greenhill Rd  
Erection of a two storey side extension, single storey front extension, rear conservatory and detached double garage, together with new vehicular crossover. Garage set back a minimum of 5m from the back of the highway. Amended 19.12.03

*Allowed*

#### d. Tree work in Conservation Area

324.110/04.04 Barton Cott 56 High  
Application to prune or remove various trees  
324.110/04.08 12 High St  
Application to prune a sycamore

#### e. Planning Appeals

SE/03/02542 32 Hillydeal Road  
Appeal against refusal for sub-division of plot and erection of new dwelling and integral double garage

#### f. Appeal Decision

SE/03/01475 La Casa Rye Lane  
Change of use of private garage to ancillary accommodation and associated alterations

*Allowed*

