

# Otford Parish Council January Newsletter 2005 No 130

Kent and South & South East England  
Village of the Year 2002  
Clerk: Mrs. B.J. Darby  
The School House, 21, High Street, Otford,  
Sevenoaks, Kent TN14 5PG  
Telephone/answerphone: 01959 524808  
Fax: 01959 525298  
otfordpc@btinternet.com  
Office hours 8.30 to 12.30 Mon to Fri

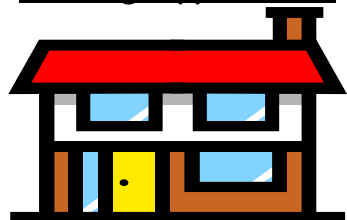
## To remember the Tsunami Victims

There will be a half hour inter-denominational service, open to all, to remember and pray for the victims of the Asian Tsunami on **Sunday 13<sup>th</sup> February at 12.30pm** at St Bartholomew's Church. The bell ringers will ring a half-muffled quarter peal.

## Police Surgery

The next Police surgery will take place at School House on **Monday 14<sup>th</sup> February** between 10am and 12 noon when our PCSO Dave Birchall will be here to answer your questions.

## Planning Applications



Planning applications in 2004 raised many concerns, hence many will be interested in the new framework under which decisions will be made. This comes into effect in 2006 but gradual replacement of the present system will take place until then. Emphasis is on consultation and the local district plan will be phased out. The new District Council document states " *It's good to talk and even better to listen. This is particularly important in planning, as the decisions made directly impact on the future of our District and all of us as individuals*" also it intends to " *achieve more responsive to changing local needs*". Clearly its effectiveness will depend on the mechanism by which the community is consulted and the extent of our response. Organisations wishing to be involved in this process must respond to SDC before the 28<sup>th</sup> January. More information is available on the District Council's website [www.sevenoaks.gov.uk](http://www.sevenoaks.gov.uk).

## Top Draw

**TOP DRAW** - The Otford Primary Draw. Your chance to win cash prizes and raise money for your local school.

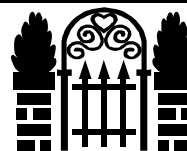
Don't forget forms are still available from the School office and the Parish Council office.

**They only need another 10 more people to join in to make £1000 per year on the draw, so come on pick up your form, pick your numbers and help your village school.**

## Otford - the past in pictures

The Otford & District Historical Society have produced a wonderful new book of old photographs of Otford. With 64 pages of pictures and accompanying text you will see a time when cattle roamed the streets and spring water was free. Discover the secrets of Otford Palace and join a Royal visit to the Forge and journey to the hamlet of Twitton and enjoy the Railway Station in the age of steam. Copies cost £7 and can be obtained from the following outlets. Parish Council Office & Heritage Centre, The Post Office, The Chemist, Telston Stores & Sevenoaks Bookshop

## 'Secret Gardens'



As part of the fundraising events that will be taking place to raise funds for the building of the new extension at St Bartholomew's Church, a tour of the 'Secret Gardens' within Otford will take place during the weekend of **4<sup>th</sup> and 5<sup>th</sup> June 2005**. If you would be willing and interested in opening your garden to the public for that weekend please could you contact Sue Stephenson on 01959 523789 (home) or mornings at School House on 01959 524808. Many thanks.

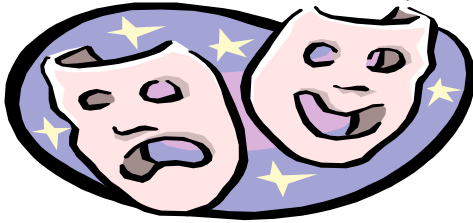
## Sevenoaks Embroiderers' Guild

The next meeting will take place in Otford Memorial Hall on **Saturday 29<sup>th</sup> January** when there will be an Exhibition and Crafts. The meetings begin at 2pm and more information can be obtained from Pat Curtis on 01959 532391.

## Over 60's Social Club

On **Wednesday January 19<sup>th</sup>** the club will have a video presentation ' Out and about with Barbara' and the first February meeting is on Wednesday 2<sup>nd</sup> when there will be a talk and video by Nick Barlow on 'Garden Birds'. Details from Jill or Ed on 01959 525775

## The Great Little Tilley



The next Applause production takes place on **Thursday 3rd March at 7.30pm** at 7.30pm in the Village Memorial Hall. You are welcome to pre - show drinks and nibbles from **6.30pm**

The Great Little Tilley has all the thrills and spills of Bawdy Victorian theatre - top hats and tails, bawdy jokes, petticoats, bold dancers and cheeky songs. Pretty Good Dance Theatre invite you to join them as they romp through this most curious tale of Vesta Tilley - Music Hall's most famous male impersonator. Fast paced choreography, enchanting stories and haunting melodies combine to make this a bold and highly entertaining piece of theatre. A must see. Suitable for all ages

Tickets £5 for adults, £4 concessions and £3 children, available from the Parish Council office or book on 01959 524808.

## Another Applause Production

Jane Bom-Bane and Nick Pynn are appearing at The Bradbourne School on **Saturday 19<sup>th</sup> March** at 7.30pm. This extraordinary show featuring Jane Bon-Bane, 'Queen of the Funky Harmonium', presents a parade of songs and poems with mechanical hats to match, from her Top Ten Edinburgh shows. Nick creates an otherworldly music-box of acoustic delights, with fiddle, live-sampling of wine glasses and playing cards, and contributions from invisible guests...It's unlikely that you have seen anything quite like this before! Suitable for adults and young people. Bookings on 01892 516706 or 01622 693517.

## Oxford Allotments Association



If you care for the environment, want to ensure that you and your family live healthily and can do with some exercise in the fresh air - why not consider an allotment, which will provide you with all these things and more. Give Barbara Hine a ring on 01959 525468 if you are interested, even if it is just to have a look

around. Or you can call into the Parish Office any weekday morning for further details.

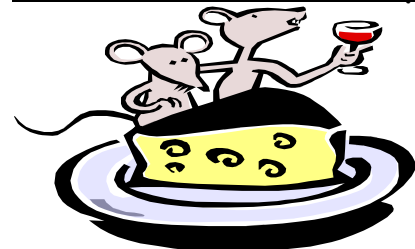
## Picture of the Month

The artist for January / February is Sheila Vizard. She says, " I should have gone to art school, but I didn't. Now as a novice in my 50's I am enjoying art but feel I have wasted many years. I find it frustrating that my hands won't do what my brain tells them to do". Sheila is a member of the Otford Art Group. If you reside in the village and paint in any medium, would you like to have one of your pictures exhibited in the Heritage Centre? Please contact Doug Dickerson on 01959 524183 for further information

## Oxford & District Wine Club

Everyone who attended the Oxford & District Wine Club's Annual Dinner Dance in December had a great time, with good food and wonderful music. However, the festive season is not over yet! On **Wednesday 26<sup>th</sup> January**, they are holding a Burns Night Party with haggis, oatcakes, shortcake and mulled wine, to give you just a hint of some of the delicacies on offer! There will also be a Scottish Raffle! They are extremely lucky to have Frank and Sally Haggarty as guest singers, so please give them a great welcome! There will be Scottish music and, of course, recitations of Burns' poems besides other entertainment. As usual this event will be held in the Oxford Memorial Hall and the evening will begin at 8pm. It will be free to members but, on this occasion, they are having a collection in aid of a charity of Frank Haggarty's choice. There will be small charge for non - members. Why not go along for a great Scottish night out amongst friends. Any queries, please ring the Secretary on 01732 - 761359

## Oxford Gardeners Society



Oxford Gardeners' Society's first meeting of 2005 is a Cheese & Wine evening in the Village Hall on **Tuesday 1<sup>st</sup> February at 8pm**. They have an interesting programme for the coming year and amongst the speakers will be Tom Hart-Dyke and the Head Gardener at the Yalding Organic Garden. There will also be a Quiz night, garden visits and three shows. Visitors and new members are always welcome. For further details contact Janet Finney on 01959 523760 or visit [www.otford.info/gardeners](http://www.otford.info/gardeners).

## Otford Oast W.I.

Give it a try, you can be sure of a warm welcome. There is a free crèche at every meeting. The first visit is free, second visit £1.50 and Annual membership is £20. For more information please contact Mrs D Metcalfe on 01322 271873

## Otford Methodist Wednesday Afternoons Women's Fellowship

Everyone is welcome to attend these meetings which take place at 2.30pm in the Methodist Church Hall and a list of the next months speakers and events are as follows: -

### January

19<sup>th</sup> - Gilbert Denton - *Victoria & Albert*

26<sup>th</sup> - Barbara Darby - *New videos*

### February

2<sup>nd</sup> - Rev Kath Pawlett - *Surprise*

9<sup>th</sup> - Ros Hitchings & friends - *Guitar & song*

16<sup>th</sup> - Magda Sweetland - *The USA in Sevenoaks*

## Otford & District Historical Society

The next meeting of the Historical Society will take place on **Wednesday 19<sup>th</sup> January** at 8pm in the Village Hall when Monty Parkin will talk on the subject of the *A25 (Ightham to Bat & Ball)* Membership of the Society is only £3 a year, which includes 6 winter talks and usually 3 summer outings. Visitors are welcome to all meetings at just £1 and children are admitted free if accompanied by an adult.

## Otford Helplines

The Parish Council are planning to reprint the Otford Helplines Directory, which last came out as a Millennium edition in 2000. If you would like your business and contact number noted in the reprint please let the office know on 01959 524808 as soon as possible.

## Dog Fouling



This is still a huge problem, not only on the Recreation Ground but also on pavements, footpaths and even in residents' front gardens. Please pick up after your dog, it is very anti social and potentially health threatening not to pick up after your dog. If you don't you risk having to pay a fine of up to a maximum of £1,000 or a fixed penalty of £25. Dog wardens do patrol the village and every effort will be

taken to discover who is responsible and when caught, fined. If you see someone letting their dog foul on a regular basis and not clear up after it do contact the dog warden at SDC.

## Sevenoaks Swing Dance Club

The next meeting of the Sevenoaks Swing Dance Club is on **Tuesday 25<sup>th</sup> January** in Otford Church Hall. The club concentrates on the favourite styles of the 1930s and 1940's - swing, jitterbug and lindy hop. Tuition starts at 8pm followed by social dancing. Admission is £6 on the door. The next meetings will be on March 8<sup>th</sup> and 22<sup>nd</sup>. For further information call 01959 522810

## Rail Timetable 17<sup>th</sup> Jan - 11<sup>th</sup> June



There are no significant changes in the new timetable. SE Trains had indicated that additional rolling stock becoming available in 2005 might enable the Tonbridge School Train to be retimed. Unfortunately this has not happened but Sevenoaks Rail Travellers Association and your Parish Council will press for this improvement to be in place at the next timetable change in June 2005.

The vacancy at Otford Station has been filled by Gordon who has transferred from the Sevenoaks Booking Office. Control of the Darent Valley Stations has been changed to Sevenoaks where the manager Clive Gray. Clive is hoping to introduce improvements to the Booking office by installing a larger ticket window and some decoration

## Roadworks

There may be a further closure to the section of Pilgrims Way East beyond Row Dow but no precise detail is available yet. The closure of Station Road forecast by one of the 'freebies' is incorrect. It probably refers to the installation of new services to the building development, which will require control by traffic lights.

## Road Signs

An order for additional 30mph signs and matching road surface roundels in Shoreham Road and Pilgrims Way West was issued in early Summer 2004 but has still not been carried out. The Parish Council is pressing for this work and repairs to refuge and crossing lights to be completed at an early date

## Citizens Advice Bureau

**Question:** My home and its contents have been badly damaged by the recent flash floods. I have buildings and contents insurance and assumed that this was exactly the sort of disaster these would cover me for, but other people have been saying that insurers are describing the flooding as an 'act of God' - meaning they do not have to pay out under the terms of the policy. Now I am worried about putting in a claim. Can you help?

**Answer:** Parts of England have again been affected by floods and householders are facing up to resulting loss and damage. Many domestic insurance policies will cover buildings, gardens and home contents in the event of flooding, but you must always check your individual policy to see if you are covered.

In some areas where there is a known risk of flooding, insurers may have excluded compensation for flood damage altogether. You can find out more from the Environment Agency's special helpline 'Floodline' on 0845 988 1188 or by visiting the Environment Agency website at [www.environmentagency.gov.uk](http://www.environmentagency.gov.uk)

If you want to find out more about claiming on your insurance the Sevenoaks CAB will be able to help.

To find out more contact them at The Library, Buckhurst Lane, Sevenoaks, Kent TN13 1HW. The office is open from 10am to 3pm Monday, Tuesday, Thursday and Friday. Wednesday 10am and 1pm appointments for form filling

☎ Tel No: 01732 - 454443

☎ Fax No: 01732 - 463164

☎ E-mail: [7oakscab@dial.pipex.com](mailto:7oakscab@dial.pipex.com)

Web page: [www.7oakscab@dial.pipex.com](http://www.7oakscab@dial.pipex.com)

The next CAB surgery will take place in School House on Tuesday 1st February 2005.

Please come along with your problems and use this local service.

## Newsletter

If you would like to put details of your events, clubs, society in the newsletter, please let the office have copy before the second Monday of the month.

If you would be willing to deliver the monthly newsletter for the Parish Council could you also let the office know.

The next Parish Council Meeting will take place on Monday 14<sup>th</sup> February at 7.30pm in the Club Room of the Village Hall.

## Planning



The following applications will be considered by the Parish Council at its meeting in January. For more information, please contact the Parish Clerk or the Strategic Services Director, Sevenoaks District Council, Argyle Road, Sevenoaks, Kent on 01732 227000

### a. New applications

SE/04/03046 **40 Hillydeal Road**  
Single storey detached outbuilding

SE/04/03125 **5 Tudor Crescent**  
Loft conversion to form new room with dormer window

### b. Amended applications

SE/04/02676 **64-66 Well Road**  
Demolition of existing dwellings, construction of new estate road and seventeen dwellings plus garages and parking spaces (33 in total)

### c. Results Received

SE/04/02346 **Hillway, Pilgrims Way East**  
Insertion of 3 dormers in west roof slope to existing bedrooms *Allowed*

SE/04/02410 **Sainsbury Petrol Filling Station**  
Erection of 3 no. non illuminated spoke signs *Allowed*

SE/02456 **5 Tudor Crescent**  
Loft conversion to make two new rooms with dormer windows upon rear roof plane and insertion of two rooflights in front roof plane *Refused*

SE/04/02637 **11 Bubblestone Road**  
Rebuilding of existing workshop, enlargement of existing first floor store to make bedroom through insertion of dormer upon western roof plane *Allowed*

SE/04/02693 **Land rear 18-20 Tudor Crescent**  
Conservatory *Allowed*

SE/04/02836 **Frog Farm Pilgrims Way West**  
Demolition of existing farmhouse and barns and erection of replacement dwelling with attached triple garage *Refused*

