

# Otford Parish Council

## June Newsletter 2007

### No 158

Kent and South & South East England  
Village of the Year 2002

Clerk: Mrs. B.J. Darby

The School House, 21, High Street, Otford, Sevenoaks,  
Kent TN14 5PG

Telephone/answerphone: 01959 524808

Fax: 01959 525298

Office hours 8.30 to 12.30 Mon to Fri

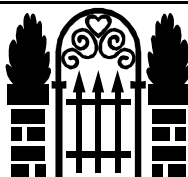
[otfordpc@btinternet.com](mailto:otfordpc@btinternet.com)

### Otford Fete



Well the theme of the fete certainly lived up to its name! But what a lovely occasion it still turned out to be. The procession was bigger than we have had for a few years and after the brave decision by the Committee to carry on with most of the stalls in the village hall everyone just got on with it in true stoical fashion and although things got quite cosy and a bit steamy in the village hall everyone had a good time. A special thanks to all those stall holders who had to stay outside. Otford Parish Council would like to thank the Committee of Patty (Chair), Jacky, Jo, Alex, Tracey, Mark, Debbie, Andy, Ros and Jackie for all their hard work. Well Done.

### St Bartholomew's Church Fair



Have a lovely family afternoon out and go along to St Bartholomew's Church Fair, on **Saturday 16th June** at 2pm in the beautiful grounds of Castle House, by kind permission of the owners. Stalls will include Plants, Cakes, Toys, Crafts, Music, White Elephant, Books, Tools / Gardening Equipment and other attractions. Refreshments will be served all day. Programmes will be on sale before the fair and on the gate for 50p children under 5 free.

### Country Garden Fair



Watch this space next month for more details about St Bartholomew's 'Country Garden Fair' which will be taking place on **Sunday 15th July** between 2 - 5pm in the grounds of Chevening House. With up to 50 assorted stalls and lots of attractions for everyone including birds of prey, bouncy castle and wall, live music and tethered hot air balloon rides

and not forgetting the popular teddy bear aerial runway. It will be a wonderful occasion. Don't miss it.

### Sevenoaks Festival



The 38<sup>th</sup> Sevenoaks Summer Festival takes place at various venues between **Saturday 16<sup>th</sup> June** to **Sunday 1<sup>st</sup> July**.

The programme includes, art, dance, drama, musicals, classical, jazz, Blues, Folk, World and Light music, Open days, garden parties and fayres, poetry, quiz, shows for the under 5's and walks and talks. Festival programmes are available from various outlets in Sevenoaks including the Heritage Centre and Tickets for most events can be obtained from the Sevenoaks Tourist Information Centre, Buckhurst Lane, Sevenoaks on 01732 450305.

### South East Open Studios

The 11<sup>th</sup> South East Open Studios takes place in over 250 locations including 5 artists based in Otford and Shoreham from **Saturday 8<sup>th</sup> to 24<sup>th</sup> June**. Free guides, times, map and artist directory are available from the Heritage Centre.

### Where were you?

During the May Bank Holiday weekend a group of 12 Otfordians were featured with a photograph and article in the French newspaper Ouest France enjoying three days of warm hospitality in the French village of Précigné, near Le Mans in Anjou, Western France. They visited the medieval village of Asnières sur Vègres, the Benedictine Abbey of Solesmes sur Sathé for Gregorian plainchant Vespers, a factory manufacturing thermoformed plastic parts for the automotive industry, two primary schools and a local organic beef cattle and pig farm. These visits were interspersed with good food and wine and playing the local game of Boule de Fort. There will be opportunities for further contacts when Otford hosts a similar visit next May 2008, followed by teenagers coming to camp in Otford. There is also a generous invitation for two English girls (16 - 18) to spend time in Paris and Précigné this summer, all expenses paid, apart from travel. Please contact Jane Lawrey on 01959 522360 for further details as soon as possible, if you are interested.

### Otford Society Garden Party

The Otford Society Garden Party will be held at 62A Well Road on **Saturday 23<sup>rd</sup> June** from 6pm to 8pm. Wine and canapés and Raffle. Tickets available from Hon Secretary, Carol Griffiths, 11, The Old Walk, Otford on 01959 523140

### Police Surgery

The next Police Surgery with our PCSO Dave Birchall will take place on **Thursday 5<sup>th</sup> July** between 11am and 12.30pm at School House. Please come and see him if you have any problems.

### Otford Methodist Church

Otford Methodist Church offers lively modern worship for all ages. They have a crèche for families with very young ones and run a wide range of activities for youngsters from 3 to 18 years old plus prayer and social groups for both men and women. Full details of all the church activities can be found on the web site [www.otfordmethodistchurch.org.uk](http://www.otfordmethodistchurch.org.uk) or ring 01959 522196. Sunday services: 10.30am worship followed by coffee, 6.30pm evening worship followed by coffee.

### New Hall Celebration 9<sup>th</sup> to 24<sup>th</sup> June

The Otford Methodist Church are pleased to announce the following events in their new hall.

- Special Celebration Service on Sunday 10<sup>th</sup> June at 5pm
- Saturday 9<sup>th</sup> June - Film evening for youngsters aged 9 to 18 yrs.
- Tuesday 12<sup>th</sup> June - 7pm - Fashion Show
- Thurs 14<sup>th</sup> June - 10am - 4pm - Display of miniatures
- Saturday 16<sup>th</sup> June - 9.30am - Art Sale and Exhibition
- Monday 18<sup>th</sup> June - 9am - 1pm - Mobile Planetarium
- Friday 22<sup>nd</sup> June - Plant Sale
- Saturday 23<sup>rd</sup> June - 9.30am - 12.30 - Music workshop
- Saturday 23<sup>rd</sup> June - 5.30pm - 8pm - Quiz Evening
- Sunday 24<sup>th</sup> June - 4.30pm - BBQ, songs and Balloon Race
- Sunday 1<sup>st</sup> July - Café Evening

In addition to the above coffee will be served every weekday so that you can view the halls from the 11<sup>th</sup> to 15<sup>th</sup> June between 10am and 12 noon and from 18<sup>th</sup> to 22<sup>nd</sup> June between 7.30pm and 9.30pm. For more information please call Derek Baxter on 01959 523687.

### LTA - Young Volunteer of the year Award

Graham Webb, aged 17 a former pupil of Russell House and who currently attends Tunbridge Wells Grammar School has been short listed by the Lawn Tennis Association for their Junior Volunteer of the year award 2007. Graham started helping with mini coaching sessions in Otford from the age of 12, and quickly showed a great deal of promise. He has gained a lot of experience not only in after school clubs but also on holiday courses. He has represented his school and the club in tournaments. Earlier this year he qualified as a UKCC Level 1 tennis coach and is now helping to train up other youngsters to become tennis leaders. This is a huge achievement for a youngster and with your help we would like to ask you to encourage as many people as possible to vote for him on line on the LTA website at [www.lta.org.uk](http://www.lta.org.uk). Votes in the Annual LTA awards. Voting is open until 18<sup>th</sup> June

### Petanque in Otford Club

Throughout the summer, anyone wishing to play petanque will be able to do so on land at the side of School House (the Parish Council office) from 3pm every Thursday afternoon. By chance, the stony surface is very suitable - and upto 18 people can play at one time. Do give it a try, even if the cup of tea and a chat seems more attractive

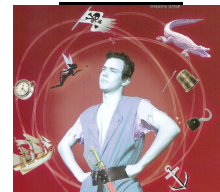
than playing the game itself. By the way, will the club really be called Otford Clackers?

### Otford Gardeners' Society Rose & Summer Show



On **Saturday 30th June** the Gardeners' Society will be holding its Rose And Summer Show featuring roses and summer flowers, early vegetables, photography, flower arrangements, cookery and junior classes. This will take place in the Otford Memorial Hall between **2.15pm - 4.15pm**. Refreshments will be served. Admission is 50p, under 16's free. Refreshments are available until 4pm. For further details telephone Janet Finney on 01959 523760 or email [gardeners@otford.net](mailto:gardeners@otford.net)

### Peter Pan



An outdoor production of 'Peter Pan' by Chalkfoot Theatre Productions will be taking place in the grounds of Otford Primary School at 7pm on **Friday 20th July**. Tickets will be available from School House at £7 adults, £6 concessions and £5 for under 16's or if you buy in advance (7 days or more before) there is a £1 discount on each ticket. The grounds will be open for an hour before for picnics (fingers crossed for sunshine) and the PTA will also be serving refreshments for school funds.

### Otford Oast WI

The next meeting of 2007 in the Otford Memorial Hall is on **Thursday 21<sup>st</sup> June** at 9.30am when Joan Egan will talk on 20<sup>th</sup> Century Collecting. If you would like to learn more or just come for the company, they are a young WI and have a free crèche for your children. Everyone is welcome. First visit is free, second visit £3 and Annual membership £26. Tea/Coffee 50p.

### Otford Afternoon W.I

Meetings are held in the Village Hall at 2pm on the 2<sup>nd</sup> Tuesday each month. Membership is £22 per year. The meeting on **10<sup>th</sup> July** Mr R Walton will give a talk on 'Hop Pickers, Hovels and Houses' - a Summer holiday for East End Londoners. Please contact the Secretary on 01959 522736 for more details.

The Afternoon WI provided a 'scratch' team for the West Kent County Bowls competition, which was held at the Sevenoaks Bowls Centre on the 14<sup>th</sup> April. To their surprise and delight they came 2<sup>nd</sup> out of an entry of 18 teams and thoroughly enjoyed the day. They could have gone onto the finals, but as it was only two days afterwards they couldn't manage it. Who knows what glory they could have come away with? Well done.

## Otford Evening WI

If any new residents in our village are interested in hearing about life as a 'Petticoat Pilot' on **Thursday 14<sup>th</sup> June**, or feel intrigued to meet a real live Llama on **Thursday 12<sup>th</sup> July** they will be most welcome at 7.30pm on either or both of these dates.

## Otford Allotment Association

Yet another surprise - the two plots mentioned last time have now been taken up - in fact we have a waiting list! If you are not on it and would like to have an allotment garden please ring Barbara Hine on 01959 525468 to ensure an early tenancy. We have an Open Day planned in July, so watch this space for details. Otherwise you can have a guided walk around at any time if you give the above number a ring, or just call into the Parish Council office on any weekday morning for details.

## The Otford Village Design Statement

The Otford Village Design Statement team held an exhibition of the results of their Workshop Day on Saturday 2<sup>nd</sup> June. At the Parish Church hall, photos and residents comments were on view. Also on exhibition were drawings by Otford Primary School children showing the things they most valued about living in Otford - a wonderful mix of village ponds, their school and of course football!

In the evening the Church Hall was packed with residents attending the Open Meeting. The design team outlined their interim proposals and there followed a positive, lively debate on the many issues that concerned Otford residents about the future of planning within the parish. The design team of the Otford VDS would now assimilate both the results of the Workshop Day and the meeting, and incorporate the views expressed into the proposal document. We will keep Otford residents up to date on progress in future newsletters.

## Sevenoaks Embroiderers' Guild

The next meeting will take place in Otford Village Hall on **Saturday 30<sup>th</sup> June**. The afternoon will feature a talk on *'Machine Embroidery & Stumpwork'* by Kathleen Laurel Sage. Morning sessions begin at 10am and afternoons at 2pm and more information can be obtained from Jane Barratt on 01732 833588.

## Shoreham Festival of Music

**22<sup>nd</sup> - 24<sup>th</sup> June**



As part of the Sevenoaks Summer Festival tickets for this year's Shoreham Festival are available now from the King's Arms PH, Shoreham (during opening hours), Sevenoaks Bookshop and by post from Jane Stanyard, Twitton House, Twitton Lane, Otford TN 14 5JS (please enclose sae). You may also ring Jane on 01959 523108 to place an order. Tickets will cost £10 for each concert, students £5, or a season ticket for all three concerts may be purchased for £25. After each concert there will be entertainment and refreshments in the garden of The Old Vicarage. We hope the weather will be as kind as last year.

**Friday 22<sup>nd</sup> June** at 7pm: **Mozart**: Clarinet Quintet, **Brahms**: Clarinet Quintet and Finzi: 5 Bagatelles performed by The Landon Ensemble: Michael Grant, Clarinet.

After this concert we welcome back Elliot Galvin: piano and James Gow: bass to perform jazz for us.

**Saturday 23<sup>rd</sup> June** at 7pm: Two Great Choral Works. Mozart: Great Mass in C Minor and Faure: Requiem. Soloists: Juliet Fraser and Isabelle Adams (Soprani), Jeffrey Gray (Tenor) and Peter Grevatt (Bass) Boy Soprano, Thomas Saunders.

Performed by Shoreham Singers with the Shoreham Sinfonia, conducted by Michael Barlow. This concert is supported by, the Sevenoaks Arts Council.

After this concert caberet songs will be performed at the piano by Clare Graydon James, who is well known, and appreciated by our audiences.

**Sunday 24<sup>th</sup> June** at 7pm: Music for Kings and Queens, performed by Temenos Chamber Choir and Consortium 5 Recorder Ensemble.

Temenos have devised an imaginative programme round a royal theme which will include music written by King Henry VIII, Vaughan Williams 'Shakespeare Songs' and Benjamin Britten's Choral Dances from Gloriana.

This concert will be followed by jazz entertainment performed by Just Friends and we look forward to seeing Dave Hutchins in Shoreham again.

The point of having a Festival is that people should come together to enjoy making music or listening and we hope the programme will entice you and your family and friends to join us. In aid of Independent Age and Shoreham Church.

## Charity Fundraiser

### An Evening with Chris Tarrant

To help raise funds for The New School at West Heath Bursary Fund come and hear a legend in his own breakfast time, Chris Tarrant, OBE on **Wednesday 18<sup>th</sup> July** at 7pm at The New School at West Heath, Ashgrove Road, Sevenoaks. With a TV career spanning 30 years his current shows include the ever popular 'Who wants to be a Millionaire' He is also a passionate angler. Put your questions to Chris, enjoy a glass of wine, chat, laughter and a chance to buy a signed copy of his latest book - *'Tarrant on Top of the World - In search of the Polar Bear'*. Limited availability, advanced booking is advised. Tickets are £10, for further details contact 01732 468995.

## Otford Methodist Wednesday Afternoons Women's Fellowship

Everyone is welcome to attend these meetings, which take place at 2.30pm in the Church Hall. Phone Rosemary Cracknell on 01959 522325 for details / transport.

### June

**20<sup>th</sup>** - Missionary garden party at 27 Well Road

**27<sup>th</sup>** - Network meeting at 10 Burntwood Road Sevenoaks

## Knole DFAS

Knole Decorative and Fine Arts Society meets on the 3<sup>rd</sup> Thursday of the month at the Sevenoaks Community Centre, Bat & Ball. The next lecture will be on **21<sup>st</sup> June** when Eveline Eaton will talk on *'Primitivism in Modern Art'*. The Lectures start promptly at 1.45pm preceded by refreshments at 12.30pm. Anyone interested in joining the

Society or who would like more information, please contact, Hilary Thomas on 01732 762529.

### Picture of the Month

The artist for June / July is Paul Barsby. Paul is a retired Marine Underwriter. He says ' I have been painting for pleasure for about 30 years. I have always painted in oils because of the freedom I believe they give. I paint mainly landscapes and still life but I am also influenced by a lifelong interest in ships and the sea. Resident in Otford only for just 3 years I am hoping to give more time to my painting. Please contact Doug Dickerson on 01959 524183 if you would be interested in displaying your work.

### Sevenoaks DFAS

The Decorative and Fine Arts Society of Sevenoaks (Evening NADFAS) 2006/2007 lecture season continues on **Thursday 12<sup>th</sup> July** when Dr David Bostwick will talk on 'Beds and Bedtime during the Tudor and Stuart Period' Please contact Mrs Jackie Bradforth on 01732 761631 or Mrs Mary Aldous on 01732 452209 for more information.

### Otford & District Wine Club

On **Sunday 24<sup>th</sup> June** the Otford and District Wine Club are holding their annual lunchtime BBQ at Sidehill, Pilgrims Way, Kemsing starting at 12.30pm. As usual we will be having sausages, hamburgers, chicken, baked potatoes and salads followed by strawberries and cream. We would be grateful to volunteers to make salads. This year the committee has decided that wine will also be provided. Everyone should bring glasses, cutlery and chairs (if possible). There will be 4 games, all with prizes for the winners and a raffle. It is free to members but guests will be charged £5. Most of you know where to park (Kemsing village Car Park or near St Mary's Church, Kemsing) and Sidehill can be reached by going up a track between the Church and the recreation ground into the back of the garden, the front of the house is in Pilgrims Way. Please ring 01732 761359 to let us know if you can come or have and queries.

### Rockdale Appeal

Visit various beautiful and interesting gardens in The Drive in aid of the Rockdale Appeal. On **Sunday 24<sup>th</sup> June** from 1pm to 6pm. There will also be plant sales, refreshments and some activities for children. Tickets £7 adults, £5 Seniors, under 12 free. Contact the Appeal Office on 01732 458762 or email [appeal@rockdale.org.uk](mailto:appeal@rockdale.org.uk) to reserve your tickets, or just turn up on the day.

### Planning

The following applications were considered by the Parish Council at its meeting in June. For more information, please contact the Parish Clerk or the Head of Development Services, Sevenoaks District Council, Argyle Road, Sevenoaks, Kent on 01732 227000

#### **a. New applications**

SE/07/01425 **4 Ryecroft Road**

Part two, part single storey rear extension and removal of chimney breast in kitchen

SE/07/01388 **11 Bubblestone Road**

Rebuilding of existing workshop, enlargement of existing first floor store to make bedroom, erection of single storey utility room to rear of property (amendment to SE/04/02637FUL)

SE/07/01613 **9 Greenhill Road**

Erection of first floor in roof above existing garage (revision of approved scheme under SE/06/02466 to incorporate larger dormer window)

SE/07/01614 **4 Hillydeal Road and part Bramber House Shoreham Road**

Demolition of Darentmead and construction of 3 dwellings. Access from Hillydeal Road (two units) and via 'Bramber House' (1 unit)

SE/07/01633 **57 Knighton Road**

Single storey rear extension

SE/07/01664 **Springhill Shoreham Road**

Erection of two storey side extension, boundary fence and gate and single storey rear extension

#### **b. Results received**

SE/06/00943 **Frog Farm Pilgrims W West**

Details pursuant of conditions 12 and 15 (landscaping and enclosure) of application SE/05/02420/FUL

*Allowed*

SE/06/03069 **18 Tudor Crescent**

Single storey rear extension, second storey front and rear extensions and loft conversion. *Refused*

SE/07/00680 **The Chantry The Green**

Retention of close-boarded fencing and metal gate on part of North and East Boundaries *Refused*

SE/07/00682 **The Chantry The Green**

Retention of close-boarded fencing and metal gate on part of North and East Boundaries *Refused*

SE/07/00839 **Littlehurst Shoreham Road**

Proposed side first floor extension over sitting room and pitched roof over garage and garden room

*Refused*

SE/07/00938 **69 Sidney Gardens**

Rear facing dormer window

*Allowed*

SE/07/00939 **39 Pilgrims W West**

Rear single storey ground floor and rear first floor extensions

*Allowed*

SE/07/01111 **Heather Cottage Telston Lane**

First floor front and two storey side extension

*Withdrawn*

SE/07/01007 **7 Coombe Road**

Proposed front two storey extension and rear single storey extension

*Allowed*

SE/07/01219 **42 Well Road**

Single storey front/rear extensions

*Allowed*

SE/07/01460 **Pond House The Green**

Fireplace details pursuant to condition 2 (materials) of planning permission SE/06/00343/LBCALT

*Allowed*

#### **c. Amended applications**

SE/07/01040 **Bramber House Shoreham Road**

Amendment of planning permission SE/03/00945/FUL for the substitution of house types. Demolition of one dwelling and construction of 3 new dwellings, as amended by plans received on 18/5/07.

SE/07/01074 **17 Greenhill Road**

Now notified as outline application, not full. New detached chalet bungalow

